

FX 2000 - Biometric Fingerprint Scanner

Biometrika 

- *precise*
- *fast*
- *reliable*
- *intelligent*



FX 2000 – highly efficient finger-print scanner

Passwords and PIN-codes always represent a heightened risk for an unapproved access. This is quite different for the recognition of fingerprints. The FX 2000 is never mistaken. The scanner recognizes and refuses/rejects all manipulation attempts or copies. In most of the cases it is connected to a computer, and is normally used at the workplace. The high precision, optical fingerprint scanner can perform important tasks already in the sensor, due to its high-performance 32 bits RISC CPU. This improves the safety, efficiency, effectiveness, and usability. The whole information, transferred between the scanner and the computer, is encoded. The "state-of-the-art" encoding algorithm of the FX 2000 renders the data transfer totally safe.

Technical data

- Sensing area 25 x 12.2 mm²
- PKI compatible
- Resolution 569 dpi
- PC log-on software
- 32 bits RISC CPU
- Software for safe compression
- 10 frames per second
- Sentinel test-software
- automatic finger detection
- Smart-card reader option
- 128 bits encoding
- OEM version
- safe acquisition
- Expandable firmware

Parallel interface: Windows 95/98/Me/NT/2000/XP and Linux

USB: Windows 98/Me/2000/XP and Linux

The sophisticated optical design and the extra-large sensing area (25 x 13.2 mm²) of the scanner generate a high-quality images, since a larger amount of minutiae are recognized and the overlapping area is maximized for two acquisitions of the same finger. This increases the overall accuracy (smaller FAR) and, over and above that, it reduces the probability of a rejection (FRR). This is an obvious advantage compared to the capacitive method.

The activation of the auto-detection mode is displayed on the scanner by a green flashing LED.



Sensing area 25 x 13.2 mm



Hardware Versions

FX 2000 SC The integration of a SmartCard reader makes possible to store/save fingerprints as well as data on the SmartCard. The software is able to verify if the fingerprint stored on the SmartCard matches the one recently taken, and act accordingly. Since the fingerprint is stored on the chip-card and not on the server, no central server is necessary for the identity verification. The reader within the FX 2000 SC is recognized by the operating system as a standard PC/SC device and can be used for every read/write application in most existent chip-cards and memory cards.



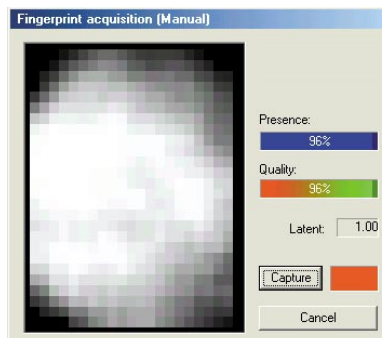
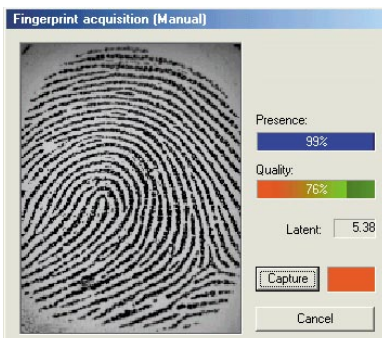
FX 2000 Integrator

A scanner-engine for the installation in any hardware you like.

FX 2000 lock

The first multi-biometric terminal for the access and presence control.

Software



FX 2000 sentinel

Demonstration software with user interface. It gives the end user and applications developer a better understanding of the fingerprint recognition technology, for the 1-1 fingerprint verification as well as the 1-N identification. Besides, it can be used as a training for the FX 2000.

FX 2000 logon

Log-in without a password. The access to the PC via fingerprint replaces the unsafe resp. complicated passwords, unauthorized accesses or attacks are impossible. The access to the net and the integrated resources, i.e. internet, printer, memory, etc., can be controlled as well. The installation and integration is easy to perform.

FX 2000 secure

Protection of documents. One fingerprint is enough for protecting your files against an unapproved access. FX 2000 secure encodes the documents via a symmetric coding of 128 bits and compresses it simultaneously with a "state-of-the-art" algorithm. The access to your data is secured by fingerprint in these "safety boxes".

FX 2000 sdk

Development Software. Highly efficient software modules support the acquisition, processing, and comparison of fingerprints. The developer is provided with an ideal platform for running and testing complex applications due to innovative algorithms and pattern recognition, derived from intensive research in cooperation with academia.

Additional information under merlin-electronic.de