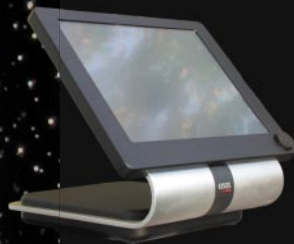


ONIX

High Performance
POS Touch System



Perfection in
Design and Quality



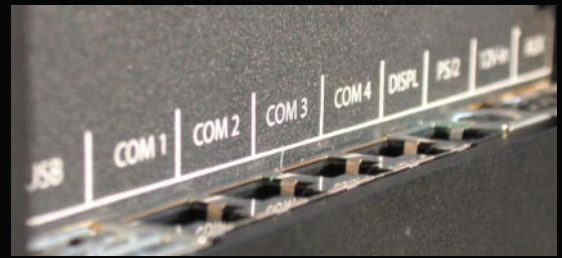
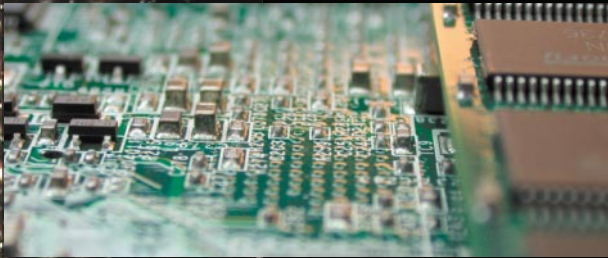

merlin

ONIX

High Performance POS Touch System



Technical data



PTS 600

CPU

- ULV Celeron-M based 600 MHz
- Industrial PC technology
- 256MB RAM (extensible 1 GB)
- Chipset: Intel 852GME + ICH4
- Ethernet: Intel 82562 (10/100Mb)

Disk

- 2,5 Zoll 60GB HDD or 4GB Flash

Display & Touch

- 10,4 Zoll TFT, 800x600, 18 bit colour
- 230 Cd, luminous intensity TFT
- most durable, resistive Touch
- USB touch controller

I/O's

- 6x RS 232 / 4x external
- 3x USB
- LAN 10/100 Mbps
- 6 chanal surround audio
- VGA

Supply

- input 10 - 30 VDC
- powersupply 240VAC
- power consumption 20 W (600MHz)

- operating temperature 0 - 60 °C
- humidity 0 - 60 %
- measures 240 x 240 x 200 mm (L x B x H)

- sophisticated Design
- housing of solid Aluminium
- fanless
- ultra compact
- industrial PC based
- waterproofed (IP 65)
- high luminous TFT display
- most durable touch display
- rich in interfaces



Additional information under merlin-electronic.de

IDS - merlin electronic
Franz-Zell-Straße 6
D-82211 Herrsching

Tel.: ++49 (0) 81 52 / 91 84 48
Fax: ++49 (0) 81 52 / 91 84 59

www.merlin-electronic.de
e-mail: info@merlin-electronic.de

merlin